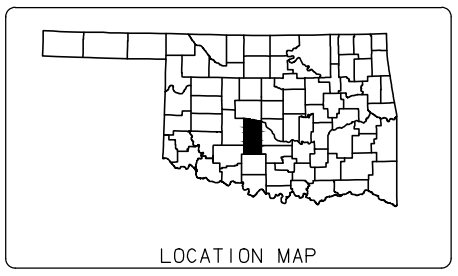


STATE OF OKLAHOMA  
 DEPARTMENT OF TRANSPORTATION

PLAN OF PROPOSED  
**TAP SIDEWALKS 2016**  
 FEDERAL AID PROJECT NO. TAP-226D(059)TP  
 STATE JOB NO. 33001(04)  
**SCHOOL ZONE IMPROVEMENTS**  
 FEDERAL AID PROJECT NO. STPG-226C(060)AG △  
 STATE JOB NO. 32403(04)  
 ON N. CIMARRON RD., S. CIMARRON RD., SE 4TH ST.,  
 AND E. MAIN ST. (SH-37)  
**GRADY COUNTY**



**DESIGN DATA**

SIDEWALK NO. 1 (SOUTH)	
AADT 2016	= 3,744
AADT 2036	= 3,932
SIDEWALK NO. 1 (NORTH)	
AADT 2016	= 1,300
AADT 2036	= 2,300
SIDEWALK NO. 2	
AADT 2016	= 11,302
AADT 2036	= 11,868
SIDEWALK NO. 3	
AADT 2016	= 770
AADT 2036	= 809

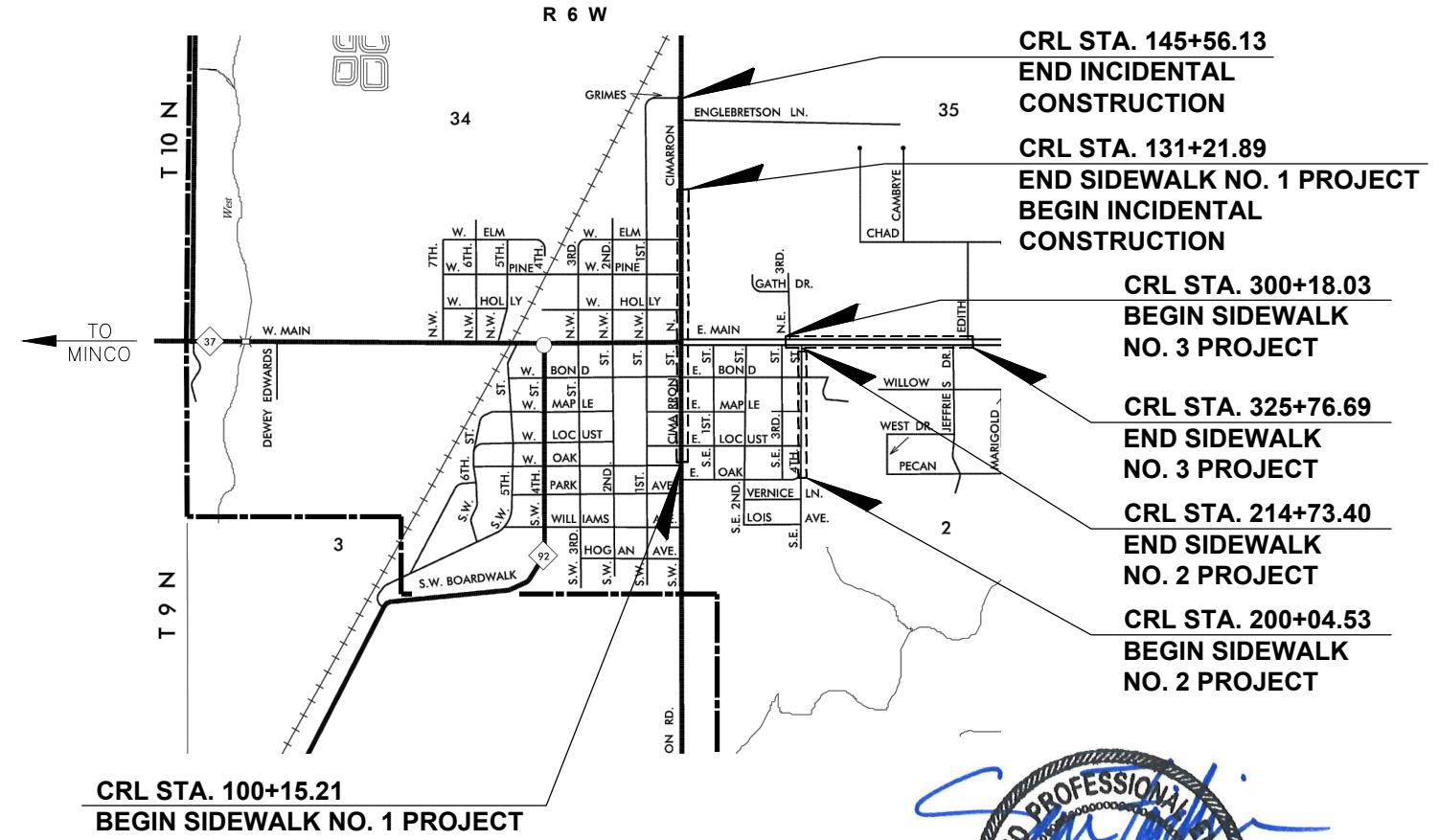
**SHEET INDEX**

SHEET NO.	DESCRIPTION
1	TITLE SHEET
2	SUMMARY OF PAY QUANTITIES AND NOTES
3	SUMMARY OF QUANTITIES
4	TYPICAL SECTIONS AND DETAILS
5	PROJECT MAP
6	SIDEWALK NO. 1 PLAN (1 OF 7)
7	SIDEWALK NO. 1 PLAN (2 OF 7)
8	SIDEWALK NO. 1 PLAN (3 OF 7)
9	SIDEWALK NO. 1 PLAN (4 OF 7)
10	SIDEWALK NO. 1 PLAN (5 OF 7)
11	SIDEWALK NO. 1 PLAN (6 OF 7)
12	SIDEWALK NO. 1 PLAN (7 OF 7)
13	SIDEWALK NO. 2 PLAN (1 OF 3)
14	SIDEWALK NO. 2 PLAN (2 OF 3)
15	SIDEWALK NO. 2 PLAN (3 OF 3)
16	SIDEWALK NO. 3 PLAN (1 OF 6)
17	SIDEWALK NO. 3 PLAN (2 OF 6)
18	SIDEWALK NO. 3 PLAN (3 OF 6)
19	SIDEWALK NO. 3 PLAN (4 OF 6)
20	SIDEWALK NO. 3 PLAN (5 OF 6)
21	SIDEWALK NO. 3 PLAN (6 OF 6)
22	CONSTRUCTION PHASING - PHASE 1 & 2
23	CONSTRUCTION PHASING - PHASE 3 & 4
24	CONSTRUCTION PHASING - PHASE 5
25	STANDARD CONSTRUCTION TRAFFIC CONTROL - PHASES 1 - 4
26	STANDARD CONSTRUCTION TRAFFIC CONTROL - SH 37
27	CONSTRUCTION TRAFFIC CONTROL PLAN - PHASE 1
28	CONSTRUCTION TRAFFIC CONTROL PLAN - PHASE 2 AT SH 37
29	STORM WATER MANAGEMENT PLAN

THE FOLLOWING O.D.O.T. STANDARD DRAWINGS SHALL BE REQUIRED:

ROADWAY	TRAFFIC SIGNING	TRAFFIC CONTROL	TRAFFIC SIGNAL
SSS-1-1	PM1-1-02	TCS1-1-01	RWSF1-1-01
ASCD-5-2	WSD3-1-00	TCS2-1-00	
CSCD-5-3	S2SD1-1-00	TCS3-1-01	
LECS-4-1	SBS1-1-00	TCS4-1-01	
PR-3-0	SBS2-1-00	TCS5-1-00	
WCR-3-1	GMS1-1-00	TCS6-1-02	
TWD-1-0	SSA2-1-00	TCS7-1-02	
MI-3-0	FGS1-1-00	TCS8-1-00	
		TCS9-1-01	
		TCS13-1-00	
		TCS14-1-00	

- (1) AN EFFORT HAS BEEN MADE TO LOCATE AND SHOW APPROXIMATE LOCATION OF UNDERGROUND UTILITY LINES. BURIED UTILITIES ARE NOT NECESSARILY SHOWN. IT IS THE CONTRACTORS RESPONSIBILITY TO LOCATE AND PRESERVE ALL UTILITIES.
- (2) CONTRACTOR IS RESPONSIBLE FOR CONTACTING ALL UTILITY COMPANIES WITHIN WORK ZONE PRIOR TO CONSTRUCTION.



PREPARED BY:  
 COWAN GROUP ENGINEERING, LLC  
 CA6414 - EXP. 06/30/18  
 OKLAHOMA CITY, OKLAHOMA

SEAN FAIRBAIRN, PE, CFM  
 OKLA. REG. NO. 26901

OKLAHOMA DEPARTMENT OF TRANSPORTATION	DEPARTMENT OF TRANSPORTATION FEDERAL HIGHWAY ADMINISTRATION
DATE APPROVED _____	DATE APPROVED _____
BY _____ CHIEF ENGINEER	BY _____ DIVISION ADMINISTRATOR
SWO _____	PROJECT NO. TAP-226D(059)TP
COUNTY GRADY	HIGHWAY SH-37
	SHEET NO. 1



SCALES  
 PLAN 1" = 20'  
 PROFILE HOR. 1" = N/A  
 VER. 1" = N/A  
 LAYOUT MAP 1" = 5280'

**CONVENTIONAL SYMBOLS**

[Symbol]	PROPOSED ROAD
[Symbol]	RAILROADS
[Symbol]	RANGE & TOWNSHIP SECTION LINES
[Symbol]	QUARTER SECTION LINES
[Symbol]	FENCES
[Symbol]	GROUND LINE
[Symbol]	EXISTING ROADS
[Symbol]	BASE LINE
[Symbol]	GRADE LINES
[Symbol]	TELEPHONE & TELEGRAPH
[Symbol]	POWER LINES
[Symbol]	BUILDINGS
[Symbol]	OILWELL
[Symbol]	DRAINAGE STRUCTURES - IN PLACE
[Symbol]	DRAINAGE STRUCTURES - NEW
[Symbol]	RIGHT-OF-WAY LINES - EXISTING
[Symbol]	RIGHT-OF-WAY LINES - NEW
[Symbol]	CONTROLLED ACCESS
[Symbol]	RIGHT-OF-WAY FENCE

**LEGEND:**

[Symbol]	DISTANCE OFFSET
[Symbol]	SPOT ELEVATION
[Symbol]	PROPOSED SIDEWALK
[Symbol]	PROPOSED HANDICAP RAMP
[Symbol]	PROPOSED CONCRETE DRIVE
[Symbol]	PROPOSED ASPHALT DRIVE

PROJECT LENGTH BASED ON C.R.L. STATIONING

SIDEWALK NO. 1 LENGTH — 3,106.68 FT. — 0.588 MI.  
 SIDEWALK NO. 2 LENGTH — 1,468.87 FT. — 0.278 MI.  
 SIDEWALK NO. 3 LENGTH — 2,558.51 FT. — 0.485 MI.  
 PROJECT LENGTH — 7,134.06 FT. — 1.351 MI.

EQUATIONS : NONE  
 EXCEPTIONS : NONE

2009 OKLAHOMA STANDARD SPECIFICATIONS FOR HIGHWAY CONSTRUCTION GOVERN, APPROVED BY THE U.S. DEPARTMENT OF TRANSPORTATION, FEDERAL HIGHWAY ADMINISTRATION, JANUARY 4, 2010.